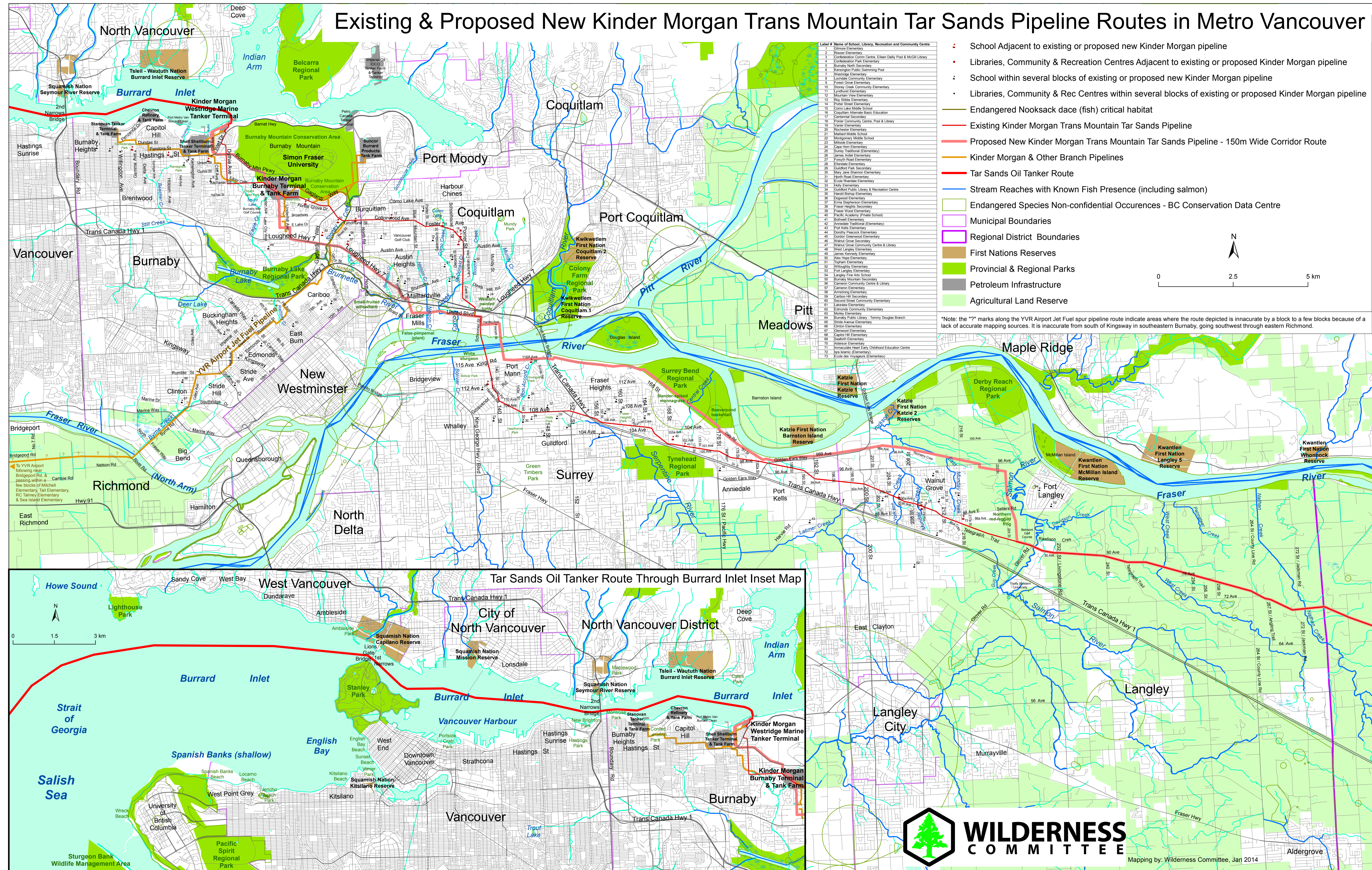


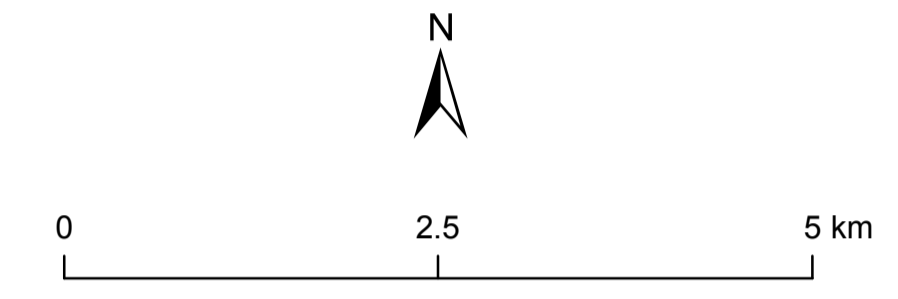
# Existing & Proposed New Kinder Morgan Trans Mountain Tar Sands Pipeline Routes in Metro Vancouver



- School Adjacent to existing or proposed new Kinder Morgan pipeline
- Libraries, Community & Recreation Centres Adjacent to existing or proposed Kinder Morgan pipeline
- School within several blocks of existing or proposed new Kinder Morgan pipeline
- Libraries, Community & Rec Centres within several blocks of existing or proposed Kinder Morgan pipeline
- Endangered Nooksack dace (fish) critical habitat
- Existing Kinder Morgan Trans Mountain Tar Sands Pipeline
- Proposed New Kinder Morgan Trans Mountain Tar Sands Pipeline - 150m Wide Corridor Route
- Kinder Morgan & Other Branch Pipelines
- Tar Sands Oil Tanker Route
- Stream Reaches with Known Fish Presence (including salmon)
- Endangered Species Non-confidential Occurrences - BC Conservation Data Centre
- Municipal Boundaries
- Regional District Boundaries
- First Nations Reserves
- Provincial & Regional Parks
- Petroleum Infrastructure
- Agricultural Land Reserve

Label #	Name of School, Library, Recreation and Community Centre
1	Prosser Elementary
2	Coronation Public Library
3	Coronation Public Library
4	Coronation Park Elementary
5	Burnaby North Secondary
6	Kingsway Public Learning Pool
7	Westridge Elementary
8	Lochside Elementary
9	Forest Grove Elementary
10	Stoney Creek Community Elementary
11	Lyndhurst Elementary
12	Mountain View Elementary
13	Boy Street Elementary
14	Purter Street Elementary
15	Como Lake Middle School
16	Coquitlam Alternative Basic Education
17	Kentennial Secondary
18	Fraser Community Centre, Pool & Library
19	Varner Elementary
20	Richner Elementary
21	Westside Elementary
22	Montgomery Middle School
23	Malcolm Middle School
24	Cape Horn Elementary
25	Stump Traditional Elementary
26	James Andler Elementary
27	Forsyth Road Elementary
28	Blenhaine Elementary
29	Guilford Park Secondary
30	May Lane Sherman Elementary
31	Hjorth Road Elementary
32	Ecole Riverside Elementary
33	Richmond Elementary
34	Guilford Public Library & Recreation Centre
35	Norfolk Elementary
36	Dogwood Elementary
37	Erna Stephenson Elementary
38	Fraser Heights Secondary
39	Fraser Wood Elementary
40	Fraser Academy (Private School)
41	Bothwell Elementary
42	Armedale Traditional (Elementary)
43	Port Kells Elementary
44	Dorothy Pascock Elementary
45	Goodwood Elementary
46	Walnut Grove Secondary
47	Walnut Grove Community Centre & Library
48	West Langley Elementary
49	James Kennedy Elementary
50	New Hope Elementary
51	Topsham Elementary
52	Wiloughby Elementary
53	Port Langley Elementary
54	Langley Fine Arts School
55	Burnaby Mountain Secondary
56	Camerson Community Centre & Library
57	Camerson Elementary
58	Armstrong Elementary
59	Cariboo Hill Secondary
60	Secord Community Elementary
61	Lakewood Elementary
62	Brookside Community Elementary
63	Mundy Elementary
64	Burnaby Public Library - Tommy Douglas Branch
65	Stoke Elementary
66	Clinton Elementary
67	Diamond Elementary
68	Capitol Hill Elementary
69	Sealth Elementary
70	Adoniam Elementary
71	Immaculate Heart Early Childhood Education Centre
72	Fraser Heights Community Centre
73	Ecole des Voyageurs (Elementary)

\*Note: the "7" marks along the YVR Airport Jet Fuel spur pipeline route indicate areas where the route depicted is inaccurate by a block to a few blocks because of a lack of accurate mapping sources. It is inaccurate from south of Kingsway in southeastern Burnaby, going southwest through eastern Richmond.



## Tar Sands Oil Tanker Route Through Burrard Inlet Inset Map

